

WELCOME



The Village of
Sleepy Hollow
Welcomes you





Sleepy Hollow began in the early 1950's as a real estate development by Floyd Falese, a local entrepreneur. He owned Sleepy Hollow Farms along Sleepy Hollow Road and also Floyd's Restaurant, which was then located on Route 31. Mr. Falese incorporated Sleepy Hollow as a Village in 1958, and a Board of Trustees was set up to govern. The first president was Mr. Falese.

Raymond Hazenkamp, a professional land planner designed the original layout of Sleepy Hollow. It includes lakes, parks, and bridle paths. There were also proposed areas for private clubs and a golf course. Model homes from which to choose were built along Sycamore Lane for construction in Village lots available from the Falese Land Company. During 1959-1960, Scholz Homes erected models of prefabricated homes that could be customized. These were on Thorobred Lane, between Hillcrest Drive and Bullfrog Lane. Other contractors, including Modular Homes, started building on Willow Lane east of Bullfrog. Roads, water, and gas lines began extending to the areas west of Sleepy Hollow Road south of Winmoor, gradually the village was being formed.

By 1974 there were 500-600 residents, including ninety units in three apartment buildings on Locust. Village roads began to deteriorate, and a bond referendum was passed to fix them. In 1979 the Village sold revenue bonds to purchase the water system that was then privately owned. About this same time a new developer, Helmut Bauman, petitioned successfully to have the property now known as Saddle Club Estates annexed into the Village. He had arranged to buy water for this area from the City of Elgin. The Village Board was then able to contract with Elgin to supply water to the entire Village.

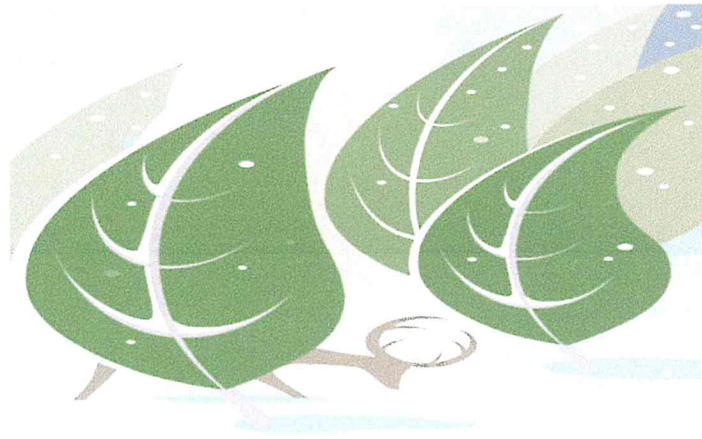
In 1977 the Village Board first began the process of applying for money from the Illinois Environmental Protection Authority to build sewers in the lower part of the Village. This area being nearest the streams and lakes and due to high water tables, the soils and topography does not make it well suited for septic systems. After a long wait the funding was granted and sewers were installed in 1987.

The Village Board consists of a President and six Trustees, all of whom are elected, as is the Village Clerk. The President conducts meetings and acts as the Chief Executive Officer. Each Trustee has an area of Village business to supervise. The Village Clerk maintains the village records and takes minutes at the meetings.

The President and the Trustees are not paid for the work they do. The Village Clerk however does receive a monthly salary. The Village Board receives assistance from the Planning & Zoning Board. The Village President with the consent of the Trustees appoints these committee members. These are all volunteer positions and receive no compensation.

Please visit us on our website at www.sleepyhollowil.org You will find more Village information on our website.

The following pages contain information that you may find useful to help you settle in.



The entire Village is a wildlife sanctuary. This means that we cannot do anything detrimental to the deer, raccoons, fox or any other wild animal that may be living in the area. The geese are also protected and under the jurisdiction of the Federal Government. Feeding deer is against the law.

As was the original plan for the Village to maintain the open spaces and long beautiful views for residents, and allow the wildlife to wander and enjoy is an important part of Sleepy Hollow to preserve.

The Village Hall is located at One Thorobred Lane which is on the corner of Thorobred and Sleepy Hollow Road. The Village Administration is available by phone Monday thru Friday, 8AM to 3:30PM, if you have any questions call us at 847-426-6700. The Police Administration Office is opened 7AM to 3:30PM Monday thru Friday; you can reach them at 847-426-4425. To report NON-EMERGENCY incidents please call 847-428-8784. This number goes to the Dispatch Quarters known as Quad Com; they will take your information and dispatch an officer if necessary.

Due to the narrow roads in the Village there is NO PARKING on any Village streets. If you find yourself or guests having to park on the street please contact the Administration Offices of the Police Department at 847-426-4425 and give the information of how many vehicles and for how long they will be parked on the street. If you are having a garage sale or party you should contact the same office to request No Parking Signs. They are to be placed across from your home so that vehicles can park on your side of the street only.

The Village is in the Rutland Dundee Township Fire District. If you have a question for the Fire Department please call the non-emergency numbers 847-428-3920 or 847-426-2522.

All mail is distributed through the Dundee Post Office; however, your mailing address is Sleepy Hollow, IL 60118. All registration of vehicles and drivers licenses should reflect this.

Trash pickup for Sleepy Hollow is Thursday. Everyone is charged for trash removal even if it is not used. GROOT is the trash removal company for the Village and provides curbside pick-up to all single family homes. You should contact them to set up service at 847-429-7370. You will be billed through them for their services. Garbage and recycling totes are provided.

Plastic bags set out is not recommended as the wildlife, i.e., raccoon, opossums, fox, coyotes etc. will quickly tear them apart.

Per Village ordinance your trash cannot be put out earlier than 6:00 pm the evening before your pickup day and must be taken in no later than 8:00 AM the morning following the pick-up day. Please call GROOT if you have any questions.

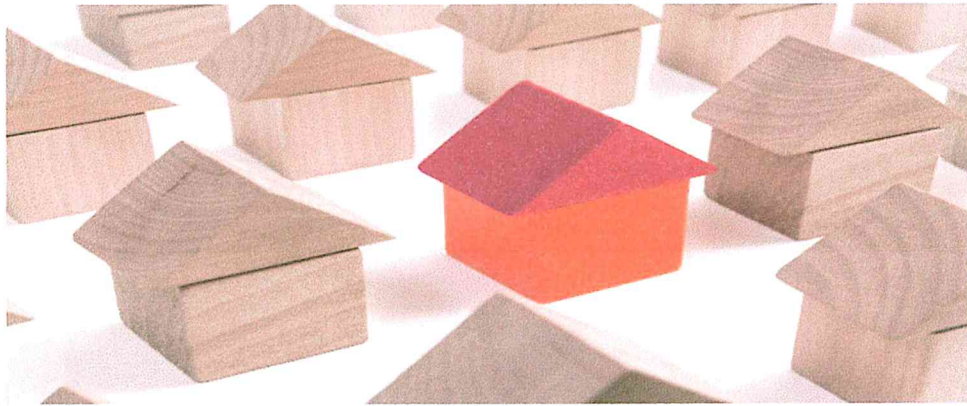
GROOT will collect yard waste and recyclable items also on garbage pick-up days. Yard waste must be in separate containers, either the brown biodegradable bags or your own receptacle, clearly marked as YARD WASTE. NO PLASTIC BAGS. Any loose material such as tree branches cannot be longer than 3 feet. When doing a bundle, make sure one person can handle it. Yard waste is picked up April – November. Yard waste stickers are not required.

Since July 1, 1994 the Illinois Environmental Protection Agency no longer allows disposal of “white goods” into the landfills. To dispose of water heaters, freezers, refrigerators, etc. call direct to GROOT to make arrangements for pickup. Electronics recycling information can be found on the Kane County Website www.countyofkane.org or you may call 630-208-3841. It is against Village ordinance to dump any kind of refuse anywhere in the Village.

The Village allows burning of tree limbs or brush on the 2nd and 4th full weekends of the month during the hours of 9AM to 5PM. Leaves may be burned following the same schedule BUT only during the months of September, October, and November. There must be someone in attendance with a hose or other dousing materials. To prevent road damage and expensive repairs no burning is permitted on the streets or in the swales.

Water/Sewer bills are sent monthly. The Water Department is Village owned and purchases all water from Elgin. Sewage disposal is handled by the Village of West Dundee. New residents should call 847-426-6700 Ext. 1702/Water Dept. for service to be put in their name. Payments for Water/Sewer must be received by 3:30 PM on the due date so that penalties are not incurred. A red box is provided at the Village Hall for drop off payments. Payment may also be made on the Village website with credit/debit card.

Com Ed is your electrical company 1-800-334-7661/ NiCor is for gas – 1-888-642-6748



A Building Permit is required before doing projects around your home. Please call or come into the Village Hall before starting on a project. The length of time to get approval on a permit takes 5-10 days, so allow enough time before setting up inspection appointments. If a project is started without a permit the cost of the permit is doubled. If you are unsure if a permit is required, please feel free to call Code Official Barbara Dettmer at (630) 816-8455.

Proper drainage is essential to preserving the roads that contribute so much to the appeal of Sleepy Hollow. To help with that property owners are required to maintain their swales at the height and grade set by the Village. Homeowners are asked to keep the swales, culverts and pipes under their driveways free of debris.

Sewage disposal for most homes in the Village is by septic system. Owners of these homes are responsible for their own systems. Homeowners should be sure it operates properly and does not cause unpleasant odors or health hazards. For additional information regarding septic and well please visit KANEHEALTH.COM/PAGES/ENVIRONMENTAL-HEALTH.ASPX

Owners of homes on the Village sewer system that have electric grinder pumps should notify the Village of any malfunction. If this occurs after 3:00 PM Monday thru Friday, on a weekend or a holiday, homeowners must call 847-428-8784 (QUADCOM/NON-EMERGENCY POLICE) and inform the dispatcher of the problem. The dispatcher will contact the Public Works employee who is on call.

The hours for Public Works are from 6:30 AM to 3:00 PM, Monday thru Friday. If Public Works employees are called out before or after hours due to internal plumbing problems or because trouble is on the service line from the sewer tank or B-Box into your home, there will be a charge for their time.

Village Ordinance requires registration of all vehicles, motorcycles, cats, and dogs. You have thirty (30) days after obtaining a new vehicle or animal to register them without incurring a penalty. New homeowners have the same thirty (30) days after moving into the Village to register their vehicles and animals. Visit the Village website to print off the application to purchase stickers and tags.

Residents are invited to attend the Board Meetings at the Village Hall on the 1st and 3rd Mondays of each month at 7:30 pm. The public may speak at either of the meetings if upon entering you sign in and each “speaker” is given 5 minutes to speak. If you think that you will need more than five minutes you may call the Village at 847-426-6700 and ask to put on the agenda and give a summary of what you will want to discuss. The Village Clerk will contact you if more information is required.

The Sleepy Hollow Pool, Community Center, tennis, and basketball courts, located on Winmoor Drive at Glen Oaks Drive are under the direction of the Dundee Township Park District. Dundee Park District information is available by calling 847-428-7131. The Village does not have any information regarding Park District programs.

Sleepy Hollow children attending public schools are generally sent to Sleepy Hollow Elementary School, Dundee Middle School, or Dundee-Crown High School. These schools are all within Community School District 300. Their phone number is 847-426-1300. There are several parochial schools also in the area.

Register to vote at the Dundee Public Library, located on Route 68 in East Dundee. To obtain their hours call 847-428-3661. For additional voter information visit kanecountyelections.org.

The Sleepy Hollow Service Club is always looking for new members to help plan and work events. If interesting in becoming a member please visit the Sleepy Hollow website and look under the Service Club tab for additional info.

Visit our Village website. There you can sign up for Email Subscriptions, see under the “How Do I” tab. You will receive The Legend Newsletter and any new alerts directly to your inbox. We think you will find Sleepy Hollow a great place to live, and we look forward to your participation in Village affairs.

CHECK LIST FOR ANIMAL PROOFING YOU HOME

FIREPLACE CHIMNEY	<i>It must be sufficiently covered on outside so that animals or birds cannot enter. Use of commercial chimney cap that MUST be secured to chimney or 1/2" wire hardware cloth secured to the sides of the chimney is suggested.</i>
FURNACE CHIMNEY	<i>Commercial cap or 1/2" wire hardware cloth secured to chimney outside.</i>
SOIL STACK	<i>Cover outside with 1/2" wire hardware cloth.</i>
DRYER VENT	<i>Cover outside with 1/2" wire hardware cloth, BUT do not cover entirely. Leave about 1/2" open on bottom. Check monthly to insure that screening is not blocked completely.</i>
BATHROOM/KITCHEN EXHAUST FAN	<i>Cover outside with 1/2" wire hardware cloth.</i>
ATTIC EXHAUST FAN	<i>Cover bottom of fan from inside attic with 1/2" wire hardware cloth stapled to rafter - usually an 18" square piece.</i>
END LOUVERS OF ATTIC	<i>Cover inside with 1/2" wire hardware cloth.</i>
SOFFIT VENTS WINDOW WELLS	<i>Cover exterior with 1/2" wire hardware cloth.</i>
GARAGE DOORS	<i>Cover tops with commercial covers and place screening over drainage vent on bottom.</i>
CEMENT STOOPS	<i>Keep closed at all times, especially after dark. Bury 1/2" wire hardware cloth, 8"x8", L-shaped below ground to deter animals from burrowing.</i>
DECKS	<i>Cover opening from ground to outside joists with L-shaped hardware cloth, burying at least 3" underground and stapled to joists to deter animal from living under deck.</i>
CEMENT SLABS FOR AIR CONDITIONERS	<i>Use the same above method for these.</i>
CAR WINDOWS	<i>Keep closed, especially during dusk and evening hours.</i>
WOODPILES	<i>Wood should be placed at least 2 feet above ground.</i>
RUBBISH PILES	<i>Remove from property. Prohibited</i>
STORED AUTOS OR OTHER VEHICLES	<i>Remove from property. Prohibited</i>